



# RETRACTABLE TARPS P/L

## TARPING SYSTEMS & COMPONENTS

ACN 069 575 711 ABN 34 069 575 711

### FRONT SHAFT ASSEMBLY PARTS LIST

 <p><b>HT-SSDS01</b> STAINLESS STEEL SHAFT 2.6 meter LENGTHS</p>	 <p><b>HT-SSDS02</b> SHAFT BEARING</p>	 <p><b>HT-SSDS04A</b> 150 mm WIRE PULLEY WITH TAPER LOCK</p>
 <p><b>HT-SSDS04B</b> 100 mm WIRE PULLEY WITH TAPER LOCK</p>	 <p><b>HT-SSDS05A</b> 3.5" BELT PULLEY</p>	 <p><b>HT-SSDS05B</b> 4" BELT PULLEY</p>
 <p><b>HT-SSDS05E</b> STEEL BELT PULLEY WITH TAPER LOCK</p>	 <p><b>HT-SSDS06</b> 24 TOOTH SPROCKET WITH TAPER LOCK</p>	 <p><b>HT-SSDSCHDP</b> 24 TOOTH SPROCKET PLATE</p>



**HT-SSDS150P**  
150 mm WIRE PULLEY



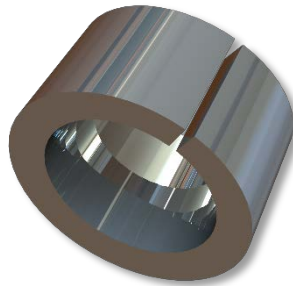
**HT-SSDS100P**  
100 mm WIRE PULLEY



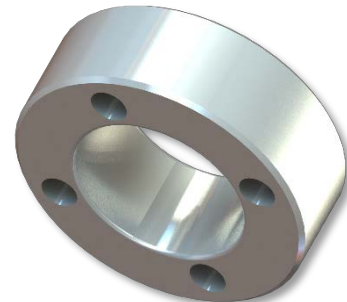
**HT-SSDSBPB**  
STEEL BELT PULLEY



**HT-SSDSTLA0**  
COMPLETE TAPER LOCK  
ASSEMBLY (c/w screws)



**HT-SSDSTLA1**  
INNER TAPER LOCK  
COLLAR



**HT-SSDSTLA2**  
OUTER TAPER LOCK  
COLLAR



**HT-SSDSTLA3**  
TAPER LOCK SCREW  
C/W WASHERS (set)

**LET US HELP YOU COVER YOUR LOAD**