

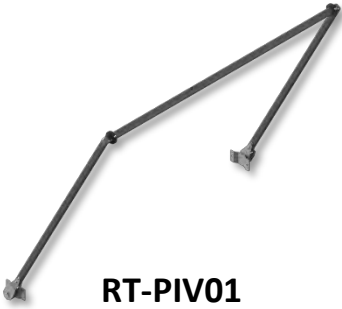










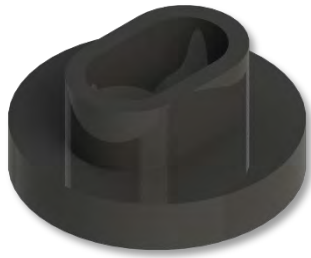
RETRACTABLE TARPS P/L

TARPING SYSTEMS & COMPONENTS

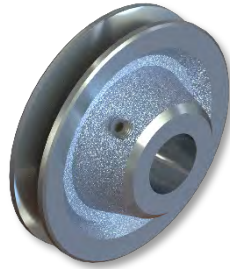
ACN 069 575 711 ABN 34 069 575 711

PIVOT ARM PARTS LIST

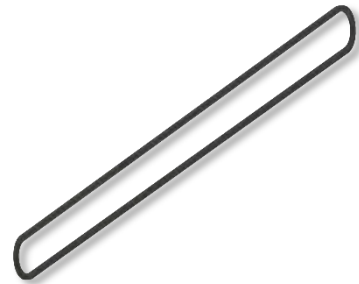
 <p>RT-PIV01 COMPLETE PIVOT ARM FRAME ASSEMBLY</p>	 <p>RT-PIVSEC SECONDARY ARM FRAME ASSEMBLY</p>	 <p>RT-AR01 PIVOT ARM SPRING ASSEMBLY</p>
 <p>RT-AR011 PIVOT SPRINGBOX BASEPLATE</p>	 <p>RT-AR012 SPIRAL TORSION SPRING</p>	 <p>RT-AR013 PIVOT ARM SIDE PLATES</p>
 <p>RT-PIV02 OVAL STEEL TUBING (PER METER)</p>	 <p>RT-PIV04 90° CAST ELBOW</p>	 <p>RT-PIV05A 60° CAST ELBOW</p>



RT-PIV06
PLASTIC OVAL BUMP
STOPS



HT-SSDS05B
4" CAST BELT DRIVE
PULLEY



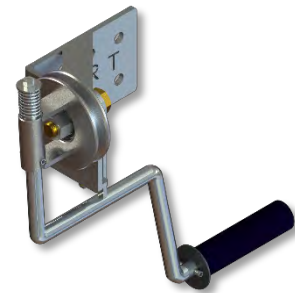
HT-DB
V-BELT VARIOUS SIZES



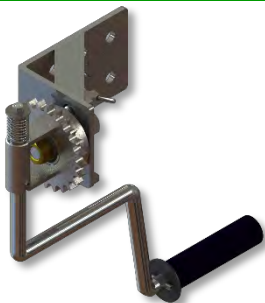
HT-BCS
PACKET OF CHAIN



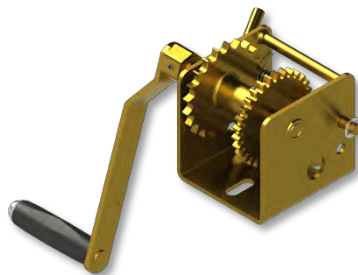
RT-PIV03
INTERNAL ARM PLUGS



HT-HAB
BELT DRIVE HANDLE
ASSEMBLY



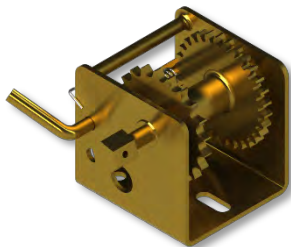
HT-CHD
CHAIN DRIVE HANDLE
ASSEMBLY



RT-21WHA
COMPLETE WINCH
DRIVE ASSEMBLY



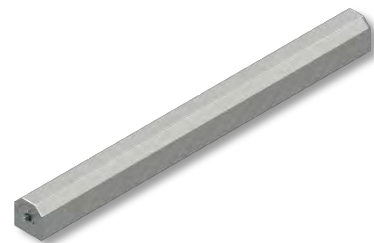
RT-WHAN
WINCH HANDLE ONLY



HT-21WA
WINCH DRIVE
ASSEMBLY ONLY
(NO HANDLE)



HT-SSDS06
24T CHAIN SPROCKET
WITH TAPERLOCK



RT-PIV07
COMPLETE ALLOY TARP
HOUSING (NO TARP)

 <p>RTR003 ALLOY COVER 4.5 mm</p>	 <p>RT-PIV08 PIVOT CASE END PLATE ASSEMBLY</p>	 <p>RT-PIV09 SHAFT BEARING c/w HOUSING & BOLTS</p>
 <p>RT-PIV10 COMPLETE CENTRE SPOOL ONLY</p>	 <p>RT-1031/0 TARPMASTER GEARMOTOR 12/24 V</p>	 <p>RT-PIVADP CENTRE SPOOL TO MOTOR ADAPTOR</p>
 <p>RT-1211/3 TARPMASTER MOTOR ONLY 12/24 V</p>	 <p>RT-10952/3 ROLL-RITE MOTOR CONTROLLER 12/24 V</p>	