



# RETRACTABLE TARPS P/L

## TARPING SYSTEMS & COMPONENTS

ACN 069 575 711 ABN 34 069 575 711

### ROLL RITE PARTS LIST

|   |   |  |
|---|---|--|
|  <p><b>RT-SHYD (S/R)</b><br/>SINGLE ARM<br/>HYDRHAULIC KIT C/W<br/>ADAPTOR AND MOTOR</p>           |  <p><b>RT-DHYD (S/R)</b><br/>DUAL ARM HYDRAULIC<br/>KIT C/W<br/>ADAPTOR, MOTOR</p> |  <p><b>RT-SAE2 (S/R)</b><br/>SINGLE ARM KIT C/W<br/>ADAPTOR, MOTOR<br/>CONTROLLER AND IN<br/>CAB SWITCH</p> |
|  <p><b>RT-SAE3 (S/R)</b><br/>SINGLE ARM KIT C/W<br/>ADAPTOR,<br/>CONTROLLER &amp;<br/>REMOTE</p> |  <p><b>RT-DAE1 (S/R)</b><br/>DUAL ARM ELECTRIC KIT<br/>C/W ADAPTOR, MOTOR</p>    |  <p><b>RT-DAE2 (S/R)</b><br/>DUAL ARM ELECTRIC<br/>KIT C/W ADAPTOR,<br/>MOTOR AND IN CAB<br/>SWITCH</p>   |
|  <p><b>RT-DAE3 (S/R)</b><br/>DUAL ARM ELECTRIC KIT<br/>C/W ADAPTOR, MOTOR<br/>AND REMOTE</p>     |  <p><b>RT-10191</b><br/>ROLL RITE HYDRALOCK<br/>GEAR MOTOR</p>                   |  <p><b>RT-10191G</b><br/>HYDRALOCK GEARBOX<br/>ONLY</p>   |



**RT-13010**  
HYDRAULIC MOTOR  
ONLY



**RT-SAE1NSP (S/R)**  
SINGLE ARM ELECTRIC  
ROLL OVER KIT c/w  
TUBE ADAPTOR AND  
MOTOR



**RT-SHYD1NSP (S/R)**  
SINGLE ARM  
HYDRAULIC ROLL OVER  
KIT c/w TUBE ADAPTOR  
AND MOTOR



**RT-RIAC (RS/FR)**  
ROLL RITE IDLER ARM  
c/w BEARINGS AND  
SHAFT ONLY



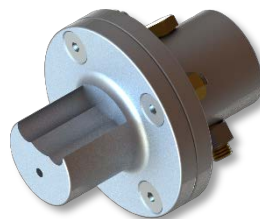
**RT-RARM (FS/FR)**  
ROLL RITE ARM ONLY  
(NO BEARINGS  
OR SHAFT)



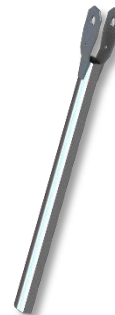
**RT-BSSI**  
BEARINGS AND SHAFT  
ONLY TO SUIT IDLER  
ARM



**RT-RRBS**  
TOP BEARING AND  
FLANGE (2 PER ARM)



**RT-RTFA**  
MOTOR DRIVE  
END/TUBE END  
ADAPTOR FLANGE



**RT-4698B**  
BOTTOM ARM ONLY



**RT-4698M**  
MIDDLE KNUCKLE  
ASSEMBLY



**RT-4698T**  
TOP ARM ONLY



**RT-AR012**  
SPIRAL TORSION  
SPRING



**RT-46360**  
PIVOT PIN FOR  
STANDARD FRONT  
SPRING BOX



**RT-46370**  
PIVOT PIN FOR  
STANDARD REAR  
SPRING BOX



**RT-47200**  
ALUMINIUM  
MOUNTING SHELF FOR  
SPRING BOX



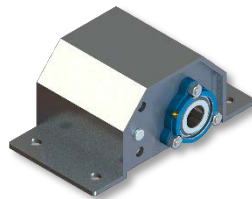
**RT-12100**  
BRONZE OUTPUT GEAR  
(HYDRALOCK MOTOR)



**RT-RP382**  
ROLL PIN 3/8" X 2"  
(FITS RT12100)



**RT-SPBH**  
SPRING BOX HOUSING  
ONLY



**RT-SPRB/FS/RS/FR/RR**  
STANDARD/REVERSED  
FRONT AND REAR  
SPRING BOXES WITH  
5/6 SPRINGS