


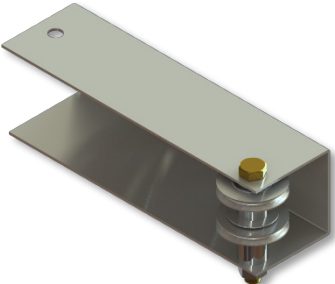
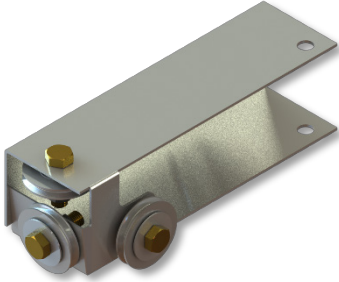
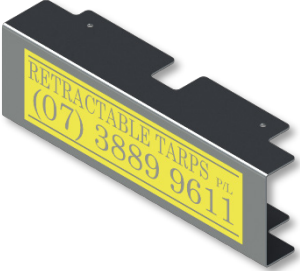
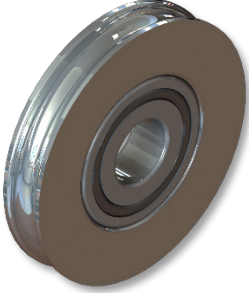






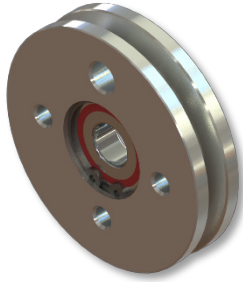
RETRACTABLE TARPS P/L

TARPING SYSTEMS & COMPONENTS

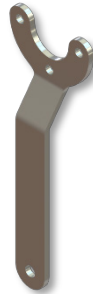
ACN 069 575 711 ABN 34 069 575 711

SINGLE CABLE PARTS LIST

 <p>RT-CPBA PULLEY BOX ASSEMBLY COMPLETE</p>	 <p>RT-PBPS P/S PULLEY BOX ASSEMBLY (NO COVER)</p>	 <p>RT-PBDS D/S PULLEY BOX ASSEMBLY (NO COVER)</p>
 <p>SC-PBCPS/DS UNIVERSAL ALUMINIUM COVER</p>	 <p>HT-RA001 PULLEY c/w BEARING</p>	 <p>SC-HAC COMPLETE HANDLE ASSEMBLY</p>
 <p>SC-HAC01 LOCKING PIN ASSEMBLY</p>	 <p>SC-HAC02 LOCKING WASHER DISC</p>	 <p>SC-HAC03 CABLE PULLEY & HANDLE</p>



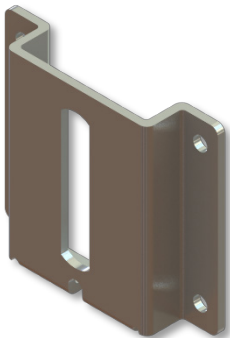
SC-HAC031
CABLE PULLEY ONLY
c/w BEARING



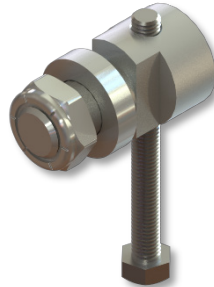
SC-HAC032
CABLE HANDLE
BRACKET ONLY



SC-HAC033
CABLE HANDLE GRIP
ONLY



SC-HAC04
MOUNTING BRACKET



SC-HAC05
CENTRE ADJUSTING PIN
c/w BOLTS



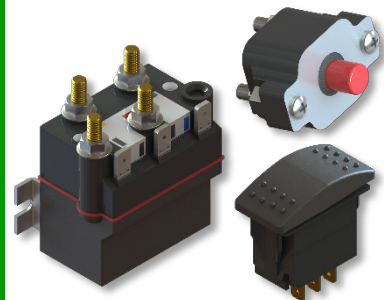
SC-EDM12/24
SW MOTOR 12/24V



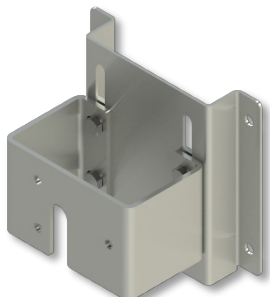
SC-EDM12/24
SW REPLACEMENT
MOTOR ONLY 12/24V



RT-10770
END BRUSH CAP TO
SUIT SW MOTOR



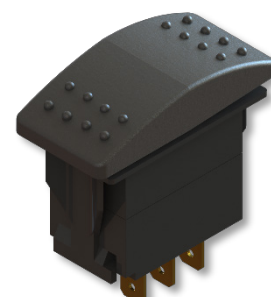
RT-20335/6
SW SOLENOID KIT
12/24V



SC-ADJB
MOTOR ADJUSTING
BRACKET COMPLETE



SC-EDP100
100mm DRIVE PULLEY
c/w COLLAR & BOLT



RT-RRSW
ROCKER SWITCH
ON/OFF/ ON