

ROLL RITE STANDARD FRONT ARM ASSEMBLY OVERVIEW

Roll Rite's Standard Roll over arm kit can be provided in either Electric (RT-SAE1 Shown right) **OR** Hydraulic (RT-SHYD) configurations. The system is available in single arm form for end tipper and walking floor applications, or dual arm if the system is being utilised by a side tipper.

AVAILABLE SPRINGBOX CONFIGURATIONS

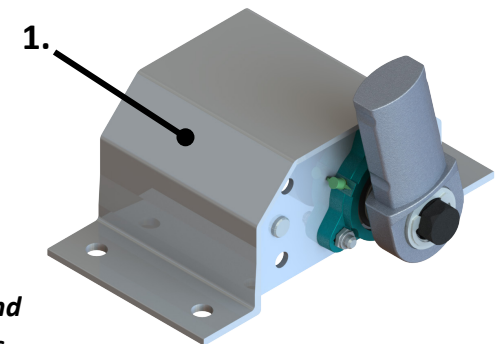
DRIVE ARM SPRINGBOX SETUPS:

- RT-SPRB/FS – Standard front mounted box C/W 6 springs
- RT-SPRB/FR – Rear mounted box C/W 6 springs

IDLER ARM SPRINGBOX SETUPS:

- RT-SPRB/RS – Standard rear mounted box C/W 5 springs
- RT-SPRB/RR – Front mounted box C/W 5 springs

NOTE: Arms are also supplied to suit front and rear configurations and its position should be noted when ordering replacement or new arms.



ROLL RITE FRONT DRIVE ARM ASSEMBLY (RT-SAE1/SHYD)			
ITEM	PART NO	QTY (PER ARM)	DESCRIPTION
1	RT-SPRB/FS	1	6 SPRING SPRINGBOX ASSEMBLY (FRONT MOUNTED)
2	RT-47200	1	UNIVERSAL FOLDED ALUMINIUM SPRINGBOX SHELF
3	RT-4698B	1	LOWER ARM ONLY (NO PIVOT PIN INCLUDED)
4	RT-4698M	1	CENTRE PIVOT PIN (INCLUDES 2 SPRINGS)
5	RT-4678T	1	TOP ARM ONLY (BARE ARM WITH NO BEARINGS OR MOTOR)
6	RT-10201	1	12 V TARP STRETCHER GEARMOTOR (166:1 REDUCTION)
7	RT-RTFA (EXT)	1	DRIVE END TWO-PIECE FLANGE ADAPTER

NOTE: Complete sub-assemblies and/or individual components are available on our website