

RETRACTABLE TARPS P/L

ELECTRICAL OPERATING GUIDE BOOKLET

**ROLL RITE CONTROLLER, SINGLE FUNCTION REMOTE,
STANDALONE BATTERY - D6**



Automated Covering Systems

...Innovative Technology for Transportation.

28-30 Terrence Road Brendale QLD 4500

PO Box 5623, Brendale QLD 4500

Phone 07 3889 9611, Fax 07 3889 9622

Email: sales@retractabletarps.com.au



RETRACTABLE TARPS P/L

TARPING SYSTEMS & COMPONENTS

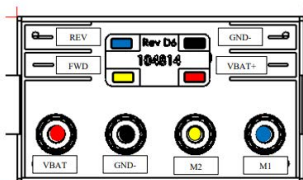
ACN 069 575 711 ABN 34 069 575 711

ROLL RITE CONTROLLER OPERATING GUIDE

CONTROLLER OPTIONS

D6 - 12VOLT AUTO (ONE TOUCH)

G2 - 24VOLT PRESS/HOLD

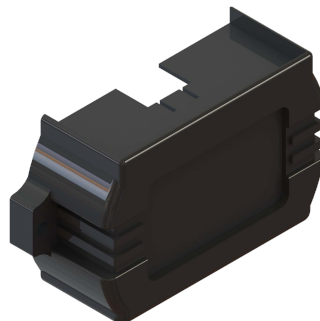


FTB HOOD TARP COLOUR CODE

RED - VBAT+
BROWN - GND-
YELLOW - FWD
WHITE - REV

STS ROLL TARP COLOUR CODE

RED - VBAT+
BROWN - GND-
WHITE - FWD
YELLOW - REV



Generation 1-Plus Rite Touch® Solid State Motor Reversing Relay (Rear View)

Vehicle Battery Connection Requirement

Power supply must come directly from the positive and negative terminals on the battery. **DO NOT** ground the negative through an isolator or to the chassis. The positive wire must have an approved manually resettable circuit breaker. Correct sized circuit breakers as follows:

12 Volt systems 40 AMP

24 Volt systems 20 AMP

For connections, a 175 AMP Anderson plug is recommended.



Wiring Size Specifications

When wiring the Roll Rite controller into a truck's system. The following minimum wire size is required:

* 6 B&S (Nominal area of 16 mm² per wire): Up to 15m of cable length - Rigid tippers up to 4.5m.

* 3 B&S (Nominal area of 26 mm² per wire): Between 15 to 30m of cable - Dog trailers / Semi tippers.

Undersized wiring can cause intermittent cut outs and low/under powered codes on the controller.



Failure to comply with Retractable Tarps and Roll Rite specifications and installation requirements will void warranty and may lead to potential property damage. More information can be found on the technical info page at www.retractabletarps.com.au

OPERATION

Rite Touch™ Operation (One touch functionality)

- Hold button for < 750 ms = incremental operation
- Hold Button for 750 ms – 2.5 seconds = automatic operation
- Hold button for > 2.5 seconds = normal press and hold operation

Features

- Smart over-current protection for 12 Volt systems
- Low voltage and over voltage detection
- No load/miswired/short circuit detection
- Dynamic braking (motor terminals are shunted when power is not applied)
- Ingress Protection Rating of IP56 minimum
- Intelligent motor protection built into controller to prevent overheating or accumulation of heat

Other Specifications

- Short circuit and ignition protected
- Operating Voltage: 7.5 to 15.5 Volts at no load
- Inrush current: capability to handle motor with inrush of up to 300 Amps
- Operating Temperature range (minimum): -20 to 65°C
- Positive Switching

DUTY CYCLE & LED PROTECTION

Programmed Protection Modes for 12 Volt Operation

MODE	AMP RANGE	FUNCTION
A	N/A	Check for Open load/ miswired/ short circuit condition
B	ALL	Motor overheating protection
C	50 Amp	Allow 50 Amp limit for 1 second (module self-protection)
D	80 Amp	Allow operation for 0.075 seconds (system overload protection)

Power Status Indicators

LED ACTIVITY	CONDITION	LED DURATION
SOLID	Operating Normally	During normal operation
2 FLASH	System Protection (80 Amps + 75 ms)	Code will repeat twice then reset
3 FLASH	Module Self Protection (50 Amp + 1 s)	Code will repeat until next button press
4 FLASH	Motor Overheat Protection*	Code will repeat until next button press
5 FLASH	Over Voltage Protection (V > 15.5 V)	Code will repeat until next button press
6 FLASH	Under Voltage Protection (V < 7.5 V)	Code will repeat until next button press
7 FLASH	Wiring Fault (no load, miswired, short)	Code will repeat until next button press

*Note:

$$(Voltage \times Amperage \times (Operating Time) - 18 \times (Stationary time)) < 58,500 \text{ Joules}$$



SINGLE FUNCTION REMOTE OPERATING GUIDE

1. On all systems with remote operation, you must activate the control box. To switch on/off (power up or power down), both buttons one and two must be depressed on the fob, or on the control box simultaneously.
2. To cover the truck body or trailer, press close on the remote module or keyfob.
3. To uncover the truck body or trailer, press open on the remote module or keyfob.

**Press and hold
for 6 seconds**

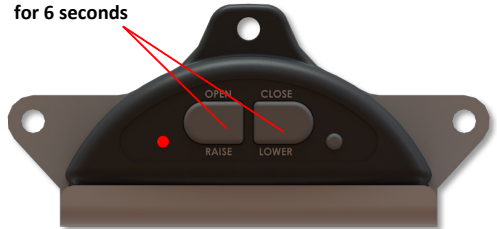


Figure 1: Remote Module

KEYFOB PROGRAMMING

1. Once you have all remotes you wish to program ready. Make sure the Remote Module is on (see above).
2. Push and hold the small round button and the large OPEN/RAISE button simultaneously for 6 seconds. The light will flash rapidly.
3. Press the top left button on the first keyfob to be programmed for 1 second (Figure 2: Keyfob button press). The red light will stop flashing momentarily, then begin flashing once again.
4. Repeat step 3 for all keyfobs'. Then let rest till module goes back into standby mode.

Press for one Second



Figure 2: Keyfob button press

AUTO SHUTOFF PROGRAMMING

1. Pressing small button and large right button will enter timer programming mode. After entering programming mode, the led will flash the number or times for the cycle it is in. Please see the table below for the different programming options.
2. To increase the time, press the left large button and to decrease the time press the large right button the LED will flash accordingly. The unit will time out of programming mode after 10 seconds of no activity. We have set the default time to on indefinitely.

Table 1: Programmable Shutoff Times

LED Flash	On Time before auto shutdown
1	On Indefinitely (default)
2	2 minute on time
3	4 minute on time
4	6 minute on time
5	8 minute on time
6	10 minute on time

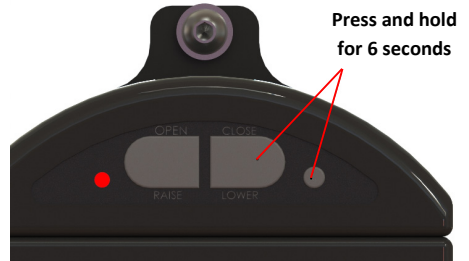
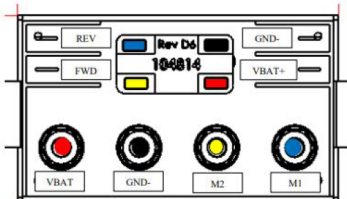


Figure 3: Auto Shutoff Initiation

CONTROLLER OPTIONS

**D6 - 12VOLT AUTO (ONE TOUCH)
G2 - 24VOLT PRESS/HOLD**

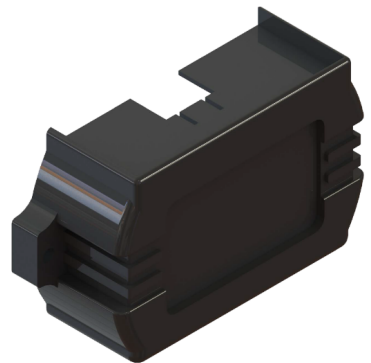


FTB HOOD TARP COLOUR CODE

- RED - VBAT+
- BROWN - GND-
- YELLOW - FWD
- WHITE - REV

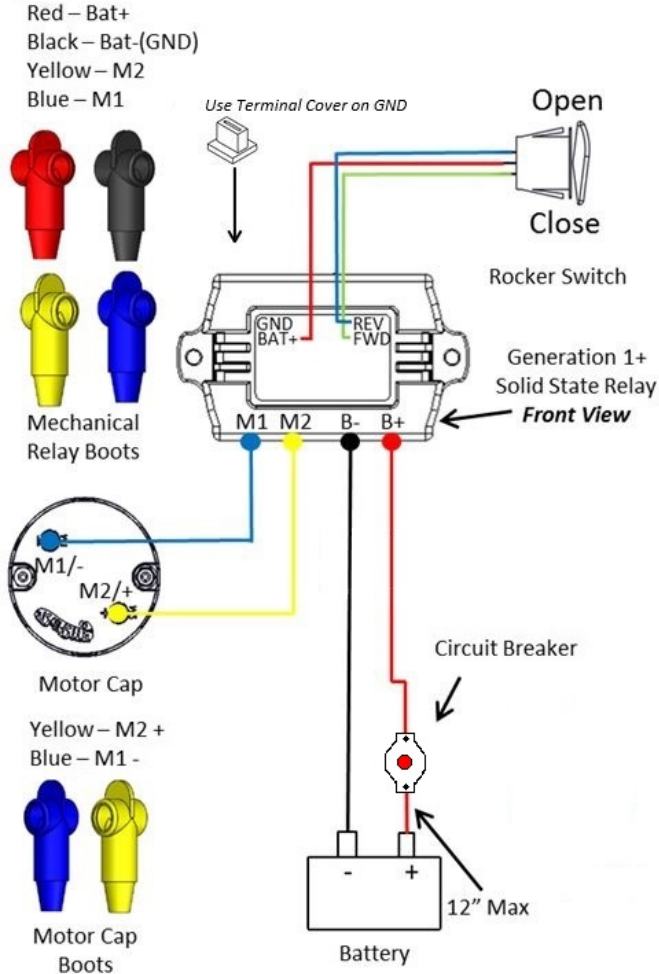
STS ROLL TARP COLOUR CODE

- RED - VBAT+
- BROWN - GND-
- WHITE - FWD
- YELLOW - REV



Generation 1-Plus Rite Touch® Solid State Motor Reversing Relay (Rear View)

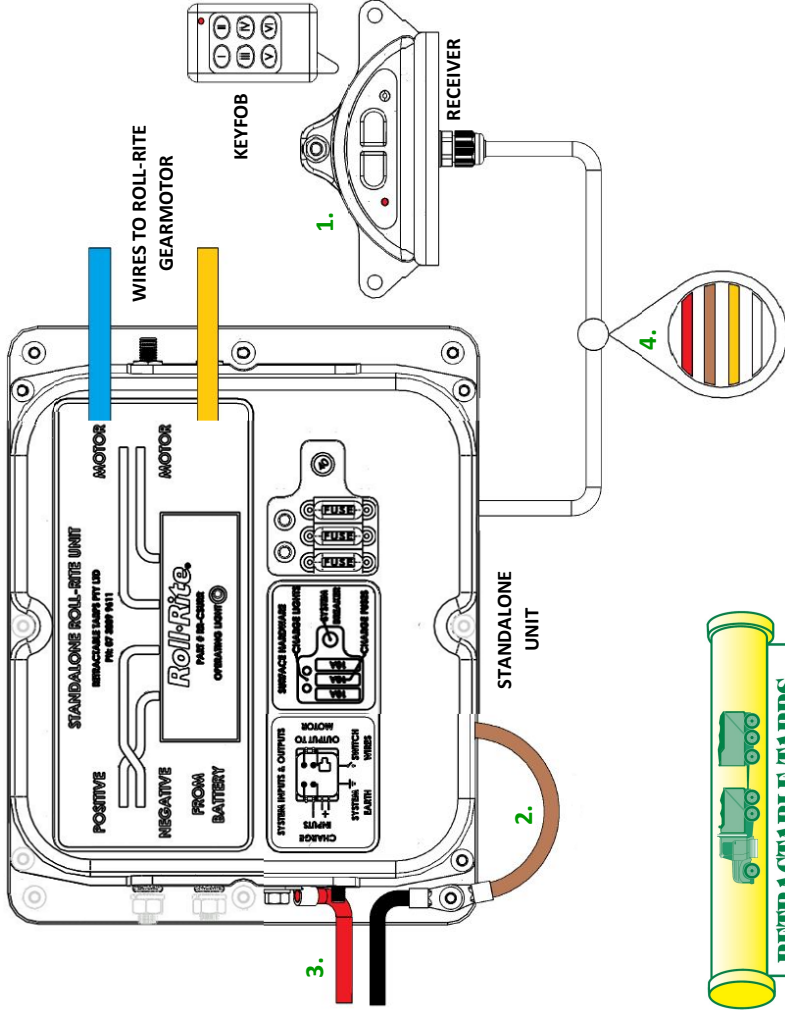
ROLL RITE CONTROLLER WIRING DIAGRAM



- * All terminals must be covered with boots
- * Correct gauge wiring as specified MUST be used
- * Supplied circuit breaker must be installed as close to the battery as possible
- * Connecting the system to the opposite poles may cause permanent damage
- * System to be wired as per the wiring diagram ONLY
- * If using a connector, only a 175 Amp Anderson Connector plug may be used
- * Only a Retractable Tarps approved manually resettable circuit breaker may be used
- * Do not supply power directly to motor terminals on motor or controller
- * Supplying power directly to controller M1 & M2 terminals will damage controller and is not covered under warranty.

STANDALONE BATTERY UNIT OVERVIEW - ROLL RITE D6

NOTE: BELOW DIAGRAM IS FOR VISUAL REFERENCE ONLY. ALL RELEVANT INFORMATION IS ON THE RIGHT



QUICK START GUIDE

Thank you for purchasing Retractable Tarps' Complete Standalone Battery Unit. Key points when first installing and starting up the unit are as follows:

1. Roll Rite Receiver **must** be turned on prior to first use. Hold both large buttons on receiver. **OR** buttons 1 and 2 on your keyfob until the receiver module red light turns on.
2. System earth must have a clean and strong connection to the vehicles chassis or equivalent.
3. The Standalone Unit will require the following Amperage rated charge inputs:
2 Fuse Unit: 6 Amps on single terminal
3 Fuse Unit: 3 Amps per terminal
 Input(s) should be drawn from the vehicles clearance lights or directly from the vehicle's batteries. Both can be used if a 3 fuse, dual input unit is purchased. **NOTE:** a 10 Amp rated fuse must be placed close to vehicle batteries if charge wire is direct from the battery.

4. If Roll Rite receiver is unavailable, system switch wires are colour coded as follows:
Red: Common Power
Brown: Receiver negative (not required for a physical switch)
Yellow: Switch Direction 1
White: Switch Direction 2
 These can be wired to an in-cab rocker switch or external switch on the body.

FOR ADDITIONAL TECHNICAL ASSISTANCE:
 28-30 Terrence Road Brendale QLD 4500
 PO Box 5623, Brendale QLD 4500
 Phone 07 3889 9611, Fax 07 3889 9622
 Email: sales@retractabletarps.com.au



TOUGH JUST GOT TOUGHER

Retractable Tarps and Roll-Rite are proud to present our new black edition gearboxes. These new units will supersede our current chrome line.



- ✓ **New** Heavy-Duty Gearboxes designed for the Aussie Market
- ✓ Updated high strength composite casing
- ✓ Up to **180 Nm** of torque, keeping operation smooth and your tarp tight
- ✓ Easy to install and operate with Retractable Tarp's one touch tarp controllers.
- ✓ Hardwired and wireless control options available
- ✓ Get yourself covered today!



RETRACTABLE TARPS PL

TARPING SYSTEMS & COMPONENTS

NATIONAL DISTRIBUTOR OF ROLL-RITE SYSTEMS

28-30 Terrence Road Brendale QLD 4500

PO Box 5623, Brendale QLD 4500

Phone 07 3889 9611, Fax 07 3889 9622

Email: sales@retractabletarps.com.au

